

➤ **STYLE HINT**

Clinton Kelly Tells You What Not To Wear

After taping 185 episodes of *What Not to Wear*, cohost Clinton Kelly can solve any fashion conundrum. Here are some of his tips.

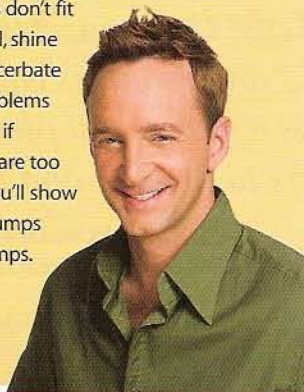
Fit: If you don't have a good fit, you'll never have good style.

Proportion: Look at your body without clothes on and determine your own proportions. Then balance out the lesser half.

Prints: If you're plus sized, itchy-bitsy prints won't work on you. It takes more of those prints to cover your body. On the flip side, if you're small, you can be easily overwhelmed with prints.

Accessories: Like prints, petites shouldn't carry a great big bag or wear gigantic sunglasses, and a bigger woman doesn't look right carrying a little bag or wearing stud earrings. They just make you look bigger.

Shine: There's a lot of charmeuse for fall. You have to be careful with it. If things don't fit you well, shine will exacerbate any problems in fit. So if clothes are too tight, you'll show all the lumps and bumps.



Meet Clinton Kelly

October 4:

Plus-size event at Macy's Somerset, 5 p.m.

October 5:

Petites event at Macy's Southdale, 2 p.m.

MADE IN CHICAGO

STARTING ON OCTOBER 9, Macy's on State Street will showcase (and sell) the collections of twenty local designers, selected by Macy's retail buyers. The debut coincides with the second annual *Fashion Focus Chicago 2007*. Here's a preview of who's in store this year.



DESIGNER: Cyndi Chan of Ori'en by Cyndi Chan
AESTHETIC: Classic chic with a twist, specializing in tailored, flattering cuts.
INSPIRATION: "Young professionals—I target the whole women's wardrobe, from evening wear to sportswear."
PICTURED: Dark red silk/satin short Audrey trench coat.
WEBSITE: cyndichan.com



DESIGNER: Orlando Espinoza
AESTHETIC: Clean. Sleek. Modern.
INSPIRATION: "The women who wear my pieces and understand my concept and style always motivate me. When they respond to my designs, it pushes my work further."
PICTURED: Slate wool jersey dress.
WEBSITE: orlandoespinoza.com



DESIGNER: Michelle Tan
AESTHETIC: Wearable, very feminine, and edgy. She often uses pleats and pintucks in her designs.
INSPIRATION: "Life is not perfect. So every season, I use lots of unfinished details."
PICTURED: Crocheted silk chiffon top and laser cut leather skirt.
WEBSITE: michelletan.com

Designer Showdown: What have you got?

For the 2007 Distinction in Design competitions, contestants get an audience with buyers and vie for a \$1,000 prize. Bring your latest creations and sketches for the judges to evaluate. Visit macys.com/events for details.

Fashion

CONTESTANTS: Fashion and accessories designers
JUDGES: Apparel buyers for Macy's
WHEN: October 9, 10 a.m. at Macy's on State Street, Minneapolis, and Somerset.

Home

CONTESTANTS: Home furnishings and décor designers
JUDGES: Benjamin Noriega Ortiz, furniture buyers, interior designers, and *Metropolitan Home* editors.
WHEN: September 26, 10 a.m. at Macy's on State Street.

M

FALL FASHION

86

PAGES OF
THE LATEST TRENDS
FOR HER + HIM + HOME

PREMIER
ISSUE!

STYLE SHOPPING PEOPLE FUN
3.95

Beauty

THIS SEASON'S
MUST HAVES

*High Gloss,
High Style*

IT'S YOUR TIME TO SHINE

MAN TIPS:

WHAT'S IN FOR SUITS, TIES,
SHOES, AND CASUAL

Plus:

MARTHA STEWART'S NEW
COLLECTIONS FOR KITCHEN,
BEDDING, DINING, AND MORE

FREE
COPY